

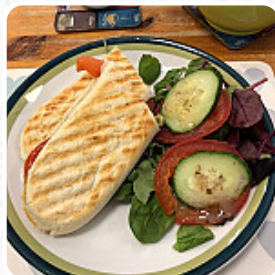


The Filling Station Menu

<https://menuweb.menu>

13 Norfolk Street, King's Lynn and West Norfolk, United Kingdom

+441553772282



Here you will find the [menu](#) of **The Filling Station** in King's Lynn and West Norfolk. At the moment, there are **45** dishes and drinks on the list. A mixed review of a cafe in King's Lynn. While some patrons praised the excellent sandwiches and friendly service, others were disappointed by the poor quality of the food and the late opening times. The decor was also a point of contention, with some finding it too loud and bright. Despite the varying opinions, the cafe seems to have a consistent source of customers who appreciate the quick service and delicious sandwiches. Overall, the cafe may have room for improvement in terms of service, food quality, and opening hours, but it still manages to attract repeat customers for its tasty offerings.

The Filling Station Menu



Non Alcoholic Drinks

WATER

Extras

CRANBERRIES

Drinks

DRINKS

Dessert

COOKIES

Schwarze Tees

EARL GREY

Toppings

TOPPINGS

Sides

BRIE

Salads

COLESLAW

SIDE SALAD

Sandwiches

FRIED EGG SANDWICH

CHICKEN SANDWICH

Side Dishes

BAKED BEANS

BAKED POTATO

Indian

CHICKEN TIKKA

ROTI

Soft Drinks

JUICE

ORANGE JUICE

Hot Drinks

TEA

COFFEE

Restaurant Category



VEGETARIAN

GREEK

VEGAN

GLUTEN FREE

These Types Of Dishes Are Being Served



BREAD

SALAD

MEAT

BURGER

PANINI

CHICKEN

TURKEY

TOSTADAS

Ingredients Used

TOMATO

CUCUMBER

The Filling Station Menu



TUNA
PORK MEAT
EGG

BACON

CRANBERRY

ONION

POTATOES

BEANS
SAUSAGE
CHEESE
PRAWNS
PEANUT BUTTER
BUTTER

The Filling Station

13 Norfolk Street, King's Lynn
and West Norfolk, United
Kingdom

Opening Hours:
Monday 09:30-15:30
Tuesday 09:30-15:30
Wednesday 09:30-15:30
Thursday 09:30-15:30
Friday 09:30-15:30
Saturday 09:30-15:45

Made with [Menu](#)

