

The Wheatsheaf Menu

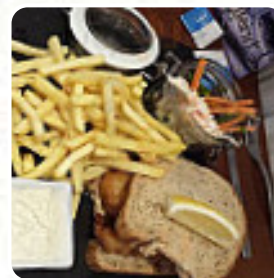
<https://menuweb.menu>

Durham Road, Chester-le-Street, United Kingdom

+441913888152, +441913888800

Smash Burger	£4.50
Smash Burger with Cheese	£5.00
Smash Burger with Bacon and Cheddar	£5.50
Smash Burger with Bacon, Cheddar and Red Onion	£6.00
Smash Burger with Bacon, Cheddar and Red Onion and Cheddar	£6.50

Smash Burger with Bacon, Cheddar and Red Onion	£6.00
Smash Burger with Bacon, Cheddar and Red Onion and Cheddar	£6.50
Smash Burger with Bacon, Cheddar and Red Onion and Cheddar	£6.50
Smash Burger with Bacon, Cheddar and Red Onion and Cheddar	£6.50
Smash Burger with Bacon, Cheddar and Red Onion and Cheddar	£6.50



On this website, you will find the **complete menu** of **The Wheatsheaf** from [Chester-le-Street](#). Currently, there are **18** meals and drinks available.

The Wheatsheaf Menu



Non Alcoholic Drinks

TONIC

Main Courses

LASAGNA

Starters & Salads

POTATO CHIPS

Chicken

PINEAPPLE CHICKEN

Sauces

BBQ

Dessert

STICKY TOFFEE PUDDING

Drinks

BEER

DRINKS

Restaurant Category

ITALIAN

BAR

Ingredients Used

PORK MEAT

BACON

HAM

SEAFOOD

These Types Of Dishes Are Being Served



BURGER

FISH

PIZZA

PASTA

The Wheatsheaf

Durham Road, Chester-le-Street,
United Kingdom

Opening Hours:

Monday 12:00-23:30
Tuesday 12:00-23:30
Wednesday 12:00-23:30
Thursday 12:00-23:30
Friday 12:00-23:30
Saturday 12:00-23:30
Sunday 12:00-23:30

Made with [Menu](#)

French Onion	£12.50
Banana Pudding	£12.00
£10.00	£12.50
pork meat, BBQ, maple, hamster, cheese, sauce, chili	
Burger	
Plain Burger	£4.50
Chicken Burger	£7.00
Chicken and red onion	£7.50
Chicken	£8.50
BBQ, Bacon and cheese	£12.50
Bacon, mushroom and Cheddar	£8.50
Chicken, Bacon and cheese	£12.50